

Technical Bulletin 03-TB-0019, Revision 1, 2013-04-04

Dear OdaLog RTx Customer,

App-Tek would like to announce the transition of our FTP data server to a externally-hosted offsite solution, that will offer improved service up-time and data security.

As such, the existing **FTP server will be retired 31/05/2013**, and all OdaLog RTx instruments will need to be updated to send data to the new FTP server BEFORE this date.

To facilitate this process, the following steps must be taken:

1. Upgrade your version of OdaStat-G to the latest version from our website:
<http://www.odalog.com/odalog/softsup.htm>
2. BEFORE 31/05/2013, ensure all of your OdaLog RTx instruments are retrieved from deployment and upgraded (process below) before deploying for a period beyond this date.
3. DOWNLOAD all logged data available from the FTP for each instrument, recommended to save data locally (App-Tek can help you copy archived data over from old server by request)
4. This process requires the customer to change both the TARGET FTP that OdaLog RTx 'sends data', as well as the the SOURCE FTP that OdaStat-G fetches data from for download/browsing. By upgrading to the latest OdaStat-G version, these 2 new options become available:
 - a. 'Connect to FTP' server address (SOURCE FTP)
 - b. when connected via IrDA to RTx, 'RTx FTP SETTINGS' server address (TARGET FTP)
5. Follow the process explained in the following section on how to change these necessary settings.

NOTE: Checking the box 'Use default App-Tek server' will automatically use the address details for the NEW FTP server (IP Address: 23.23.223.191)

NOTE: Your USERNAME and PASSWORD are the same for the NEW server, however data from the OLD server may not be available in this new location (contact App-Tek to assist with copy of archived data)

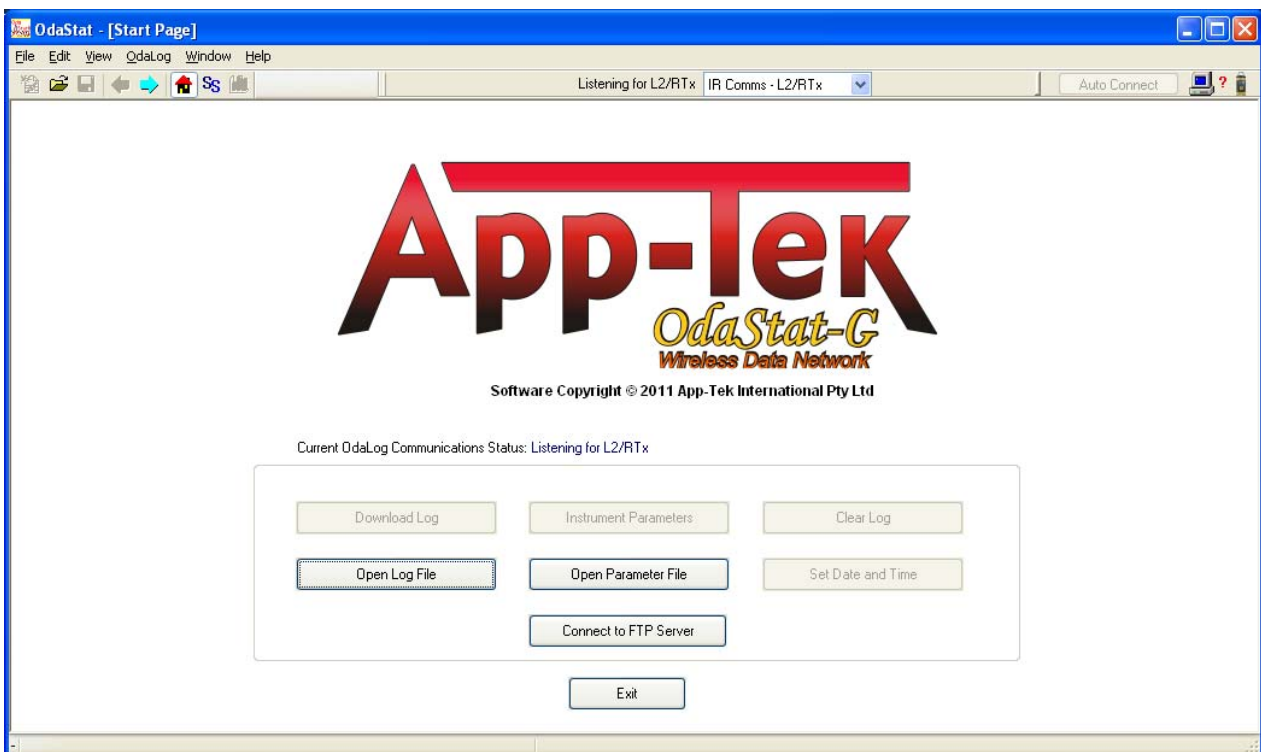
OdaStat-G Changing Current FTP Server on the OdaLog RTx instrument

Customer Information

This document provides details of the FTP Address changing on the OdaLog RTx instruments using OdaStat-G software suite.

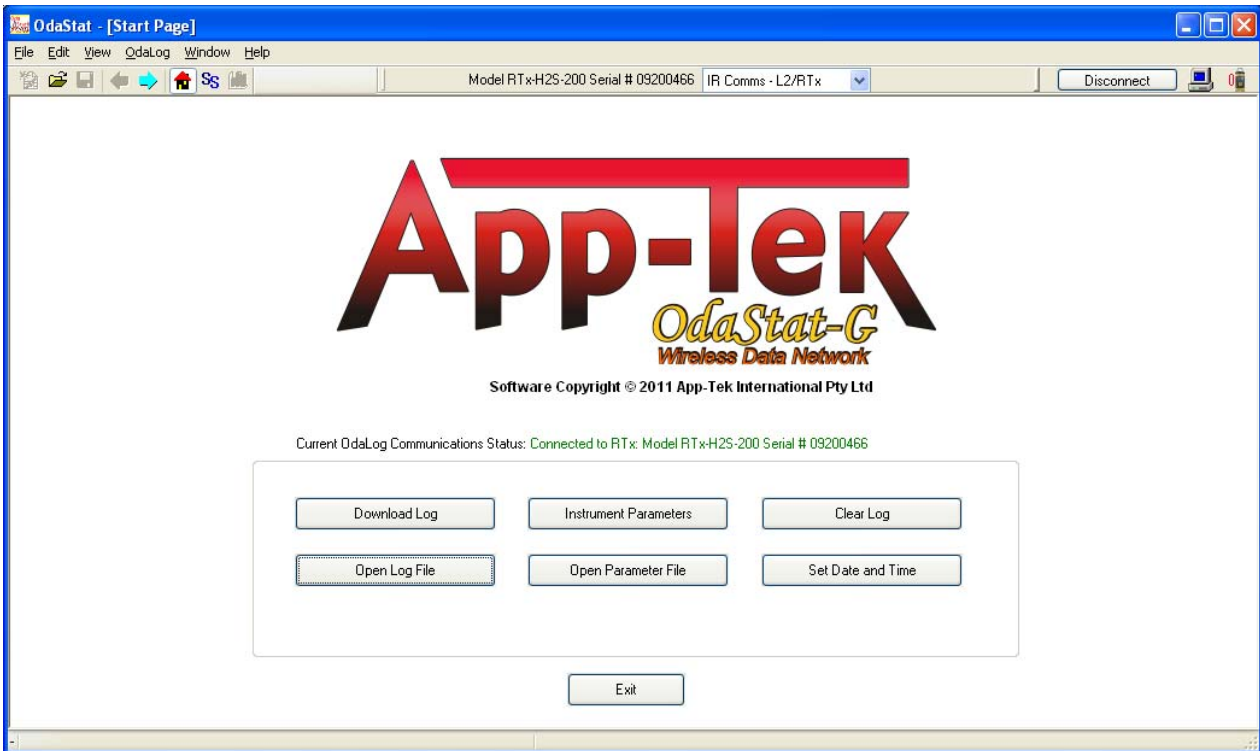
Step 1

Open OdaStat-G software suite. Check the version number to ensure upgrade has been successful. Click *HELP > ABOUT ODASTAT* and confirm the version number is 1.1.0.11 or later.



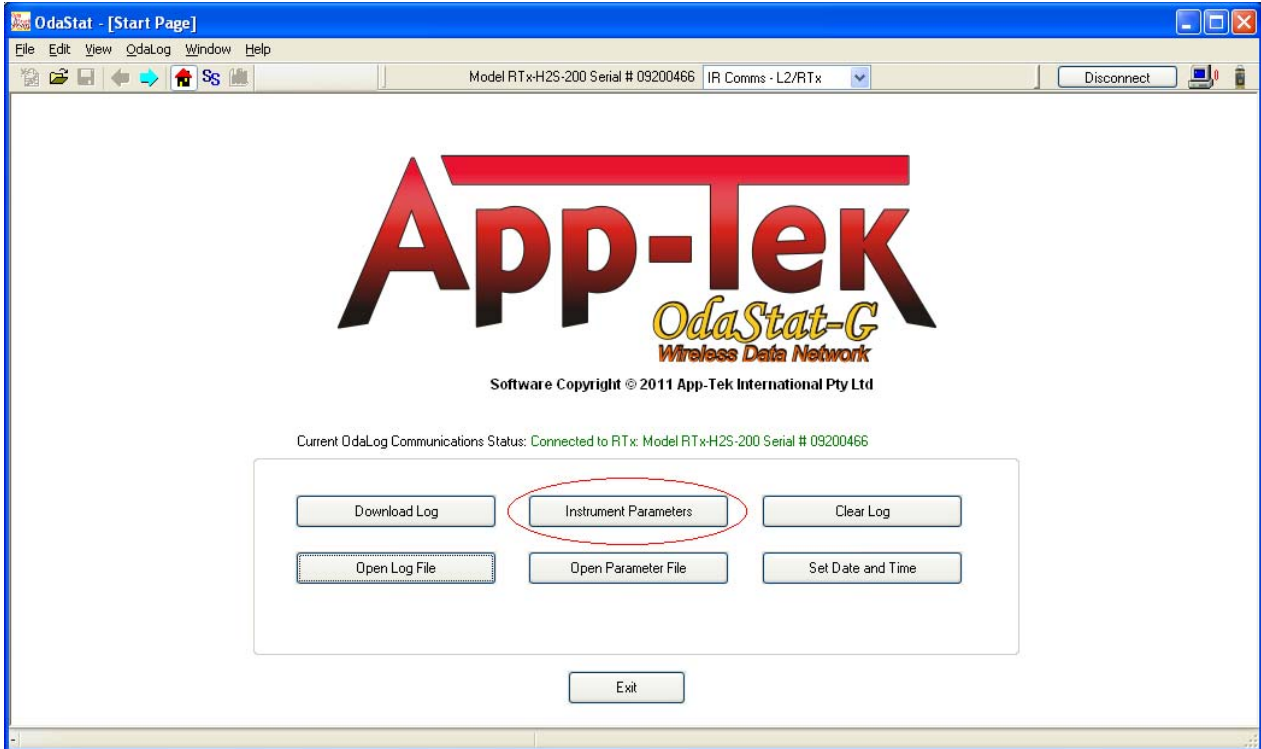
Step 2

Connect instrument to OdaStat-G via IrDA by selecting IrDA option in the instrument menu.



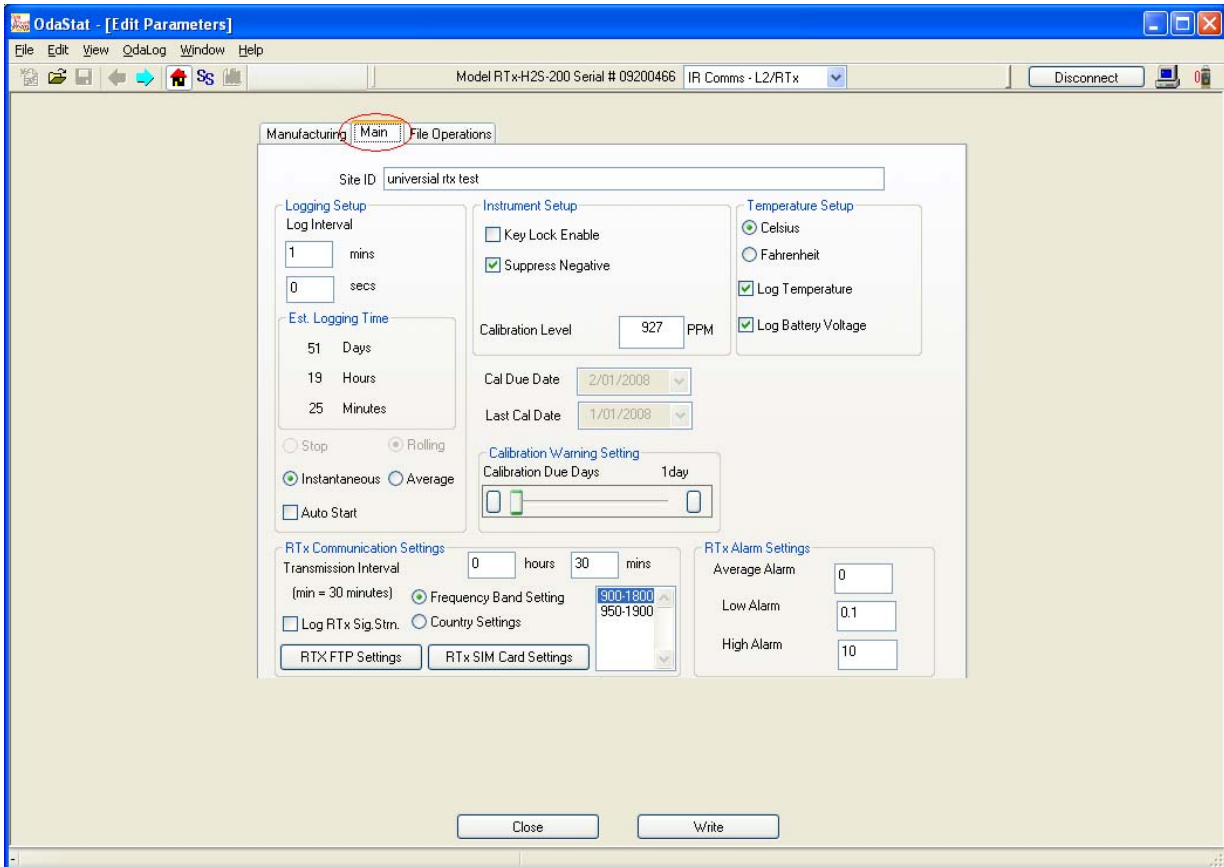
Step 3

Click the 'Instrument Parameters' button on the main view.



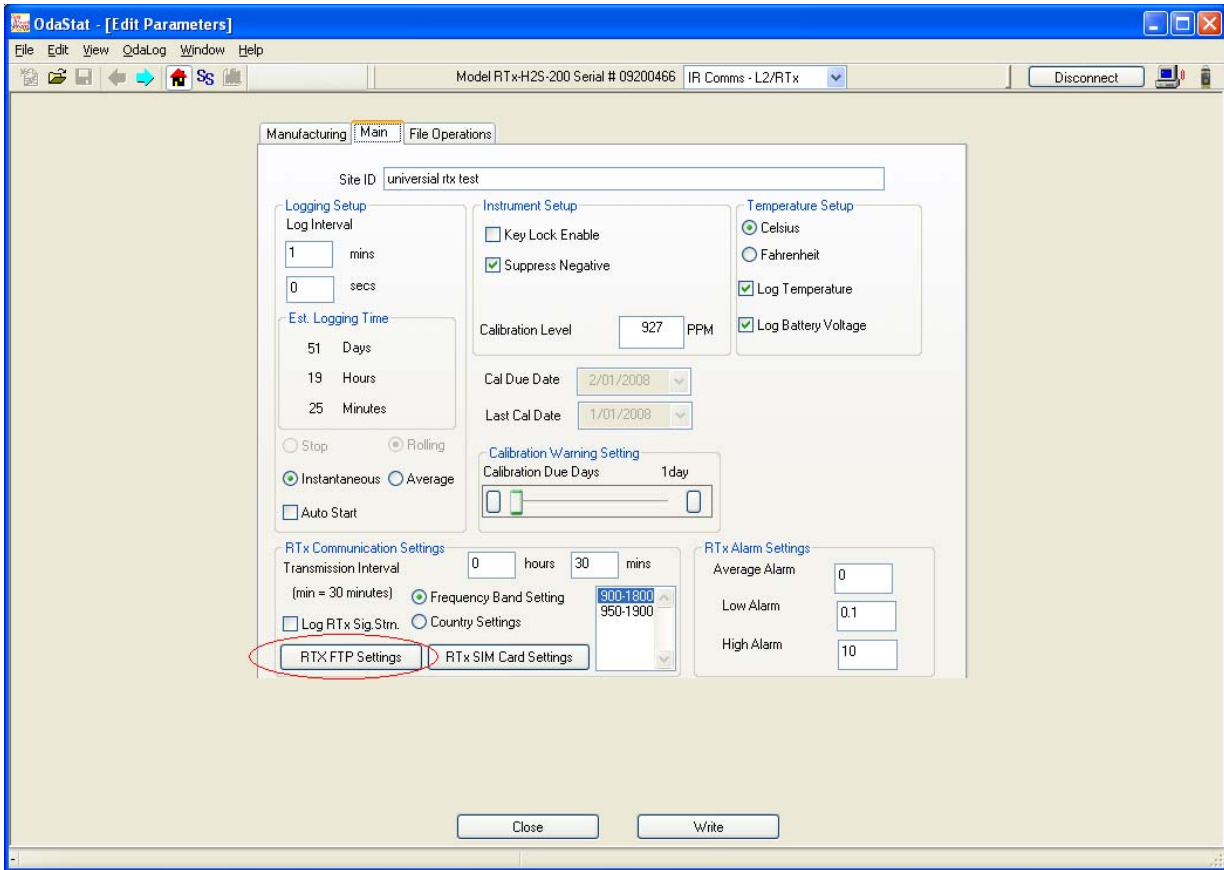
Step 4

Once instrument parameters view is appeared select 'Main' tab on the view.



Step 5

Click 'RTX FTP Settings' button in the opened page.



Step 6

'RTx Communication Settings' dialog will appear.

If you want to use default FTP server provided by AppTek International select 'Use Default FTP Server' option. Then specify username and password for the account preconfigured on this server (see 'RTx FTP Username' and 'RTx FTP Password' fields in the dialog).

The screenshot shows the 'RTx Communication Settings' dialog box. The 'RTx FTP Server IP Address' field contains '23.23.223.191'. The 'Use Default FTP Server' checkbox is checked. The 'RTx FTP Username' field contains 'ftpuser1'. The 'RTx FTP Password' field contains 'ftpuserpasswd1'. There are two empty text boxes for 'Cell Phone Numbers for Alarm Messages'. The 'OK' and 'Cancel' buttons are at the bottom.

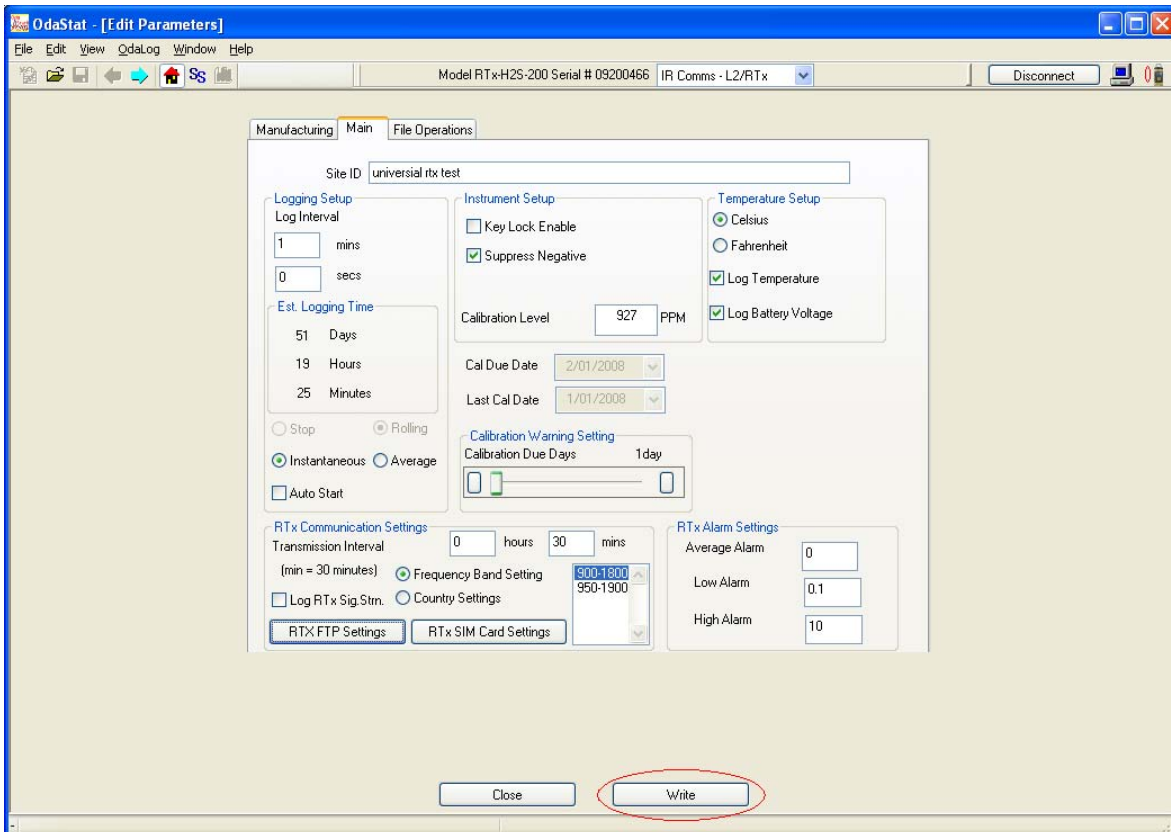
If you want to use your own FTP server deselect 'Use Default FTP Server' option in the dialog and specify your own server IP-Address or domain name in the 'RTx FTP Server IP Address Text Box'. Then specify username and password of the account preconfigured on the FTP server (see 'RTx FTP Username' and 'RTx FTP Password' fields in the dialog).

The screenshot shows the 'RTx Communication Settings' dialog box. The 'RTx FTP Server IP Address' field contains 'your.server.name'. The 'Use Default FTP Server' checkbox is unchecked. The 'RTx FTP Username' field contains 'ftpuser1'. The 'RTx FTP Password' field contains 'ftpuserpasswd1'. There are two empty text boxes for 'Cell Phone Numbers for Alarm Messages'. The 'OK' and 'Cancel' buttons are at the bottom.

Then press 'OK' button in the dialog.

Step 7

After dialog has been closed push 'Write' button in the Instrument parameters view to write changes back to the instrument.



Step 8

After writing finished, press 'Disconnect' button from the main view of the OdaStat-G to disconnect instrument from the OdaStat-G suite.

