

Technical Note

03-TB-0016, Revision 1, 2010-11-22

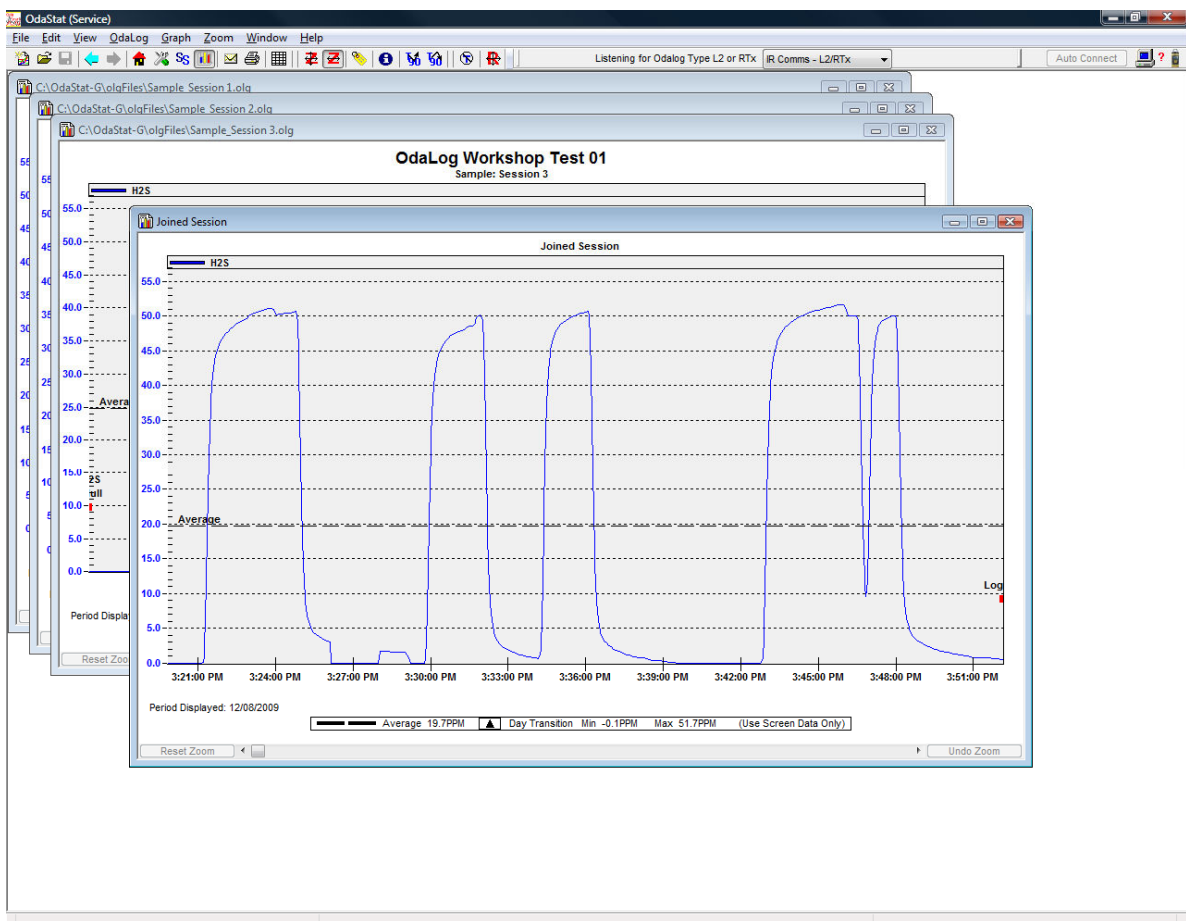
OdaStat-E 1.0.37 and OdaStat-G 1.0.48 Release Notes

Customer Information

This document provides details of changes and improvements implemented in OdaStat-E 1.0.37 and OdaStat-G 1.0.48 Release Notes.

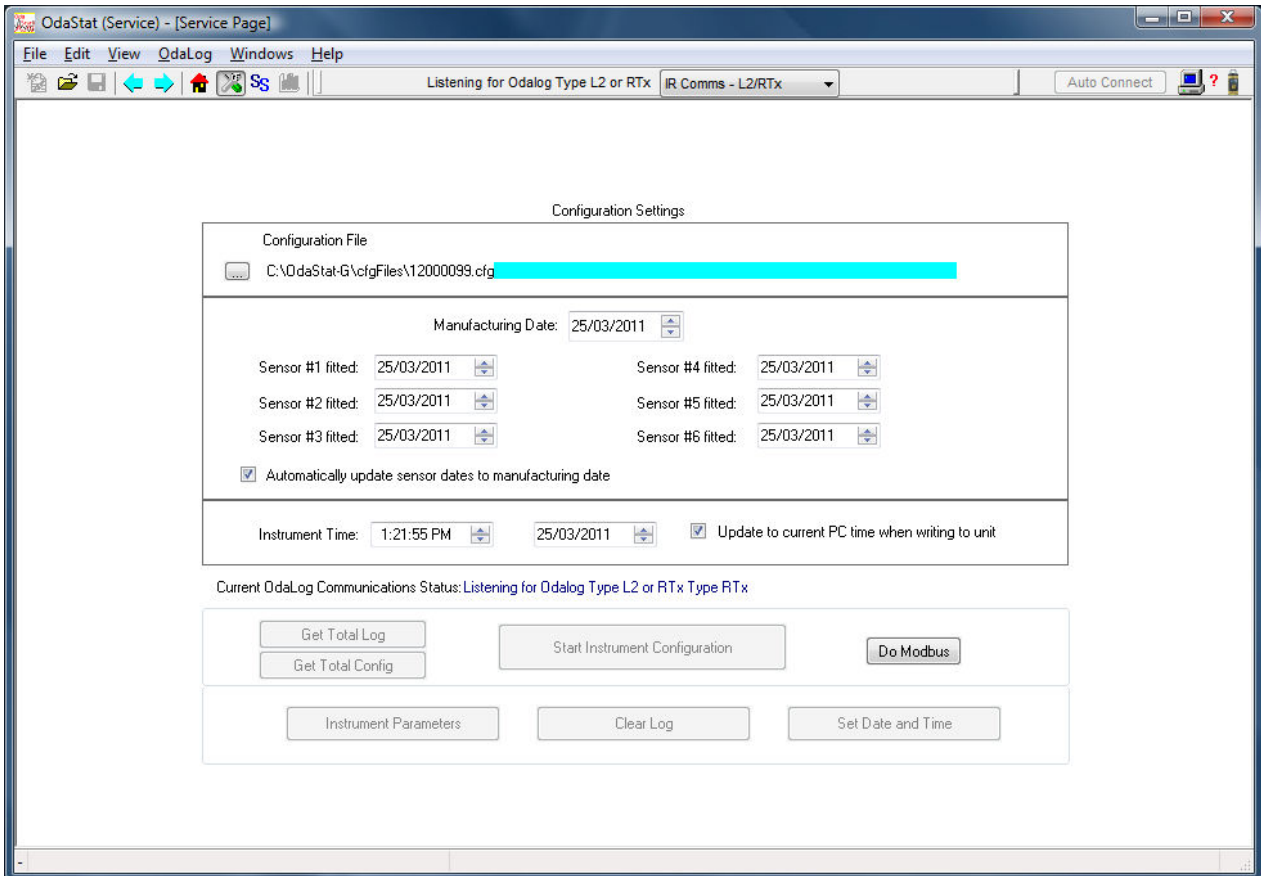
1. Issue - Join Sessions function

The "Join Session" function used to combine separate sessions of data into a single graph and data set, was disrupting the graphing functions in OdaStat-E and G often causing the applications to crash. This issue has been resolved for OdaStat-E 1.0.37 and OdaStat-G 1.0.48.



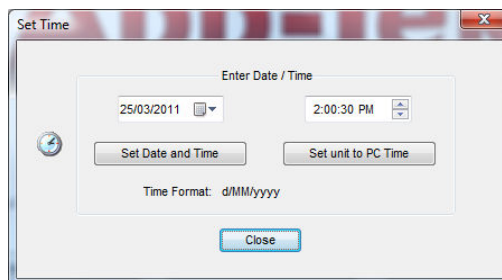
2. Issue: OdaStat-E, OdaStat-G don't retain changes to Service Mode

The "Service Mode" function in OdaStat-E and G needed to be re-activated each time the program was started. This function now only needs to be activated once on a user's PC using the correct password. OdaStat-E and G will then automatically start in "Service Mode".



3. Issue: OdaStat, OdaStat-E, OdaStat-G cannot change date/time on Type I

An error message was displayed when a user attempted to set the date and time on a Type I OdaLog. This issue has been resolved for OdaStat-E 1.0.37 and OdaStat-G 1.0.48.

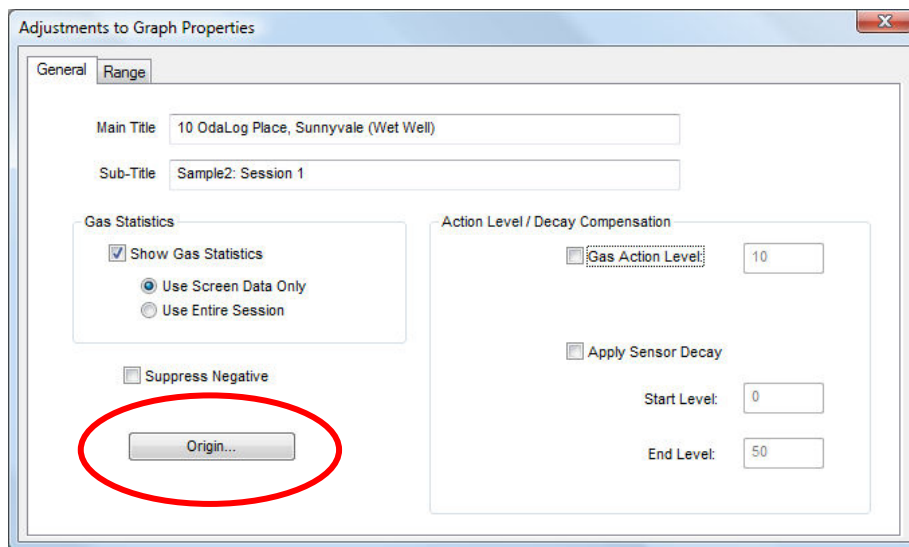


4 Issue: Type IV unable to go into CAL mode after time/date change

When the time and date were updated on a Type IV OdaLog it was then unable to enter CAL mode. This issue has been resolved for OdaStat-E 1.0.37 and OdaStat-G 1.0.48.

5 Issue: "Origin" button in OdaStat-G and E does not always appear

The "Origin" button did not always appear in the "Adjustment to Graph Properties" dialog box. This issue has been resolved for OdaStat-E 1.0.37 and OdaStat-G 1.0.48.



6. Issue: only one value can be changed at a time in "Instrument Parameters_Main Tab" (OdaStat-G only)

Only one value could be altered at a time in the "Main" tab of the "Instrument Parameters" dialog box for the OdaLog RTx. This issue has been resolved for OdaStat-E 1.0.37 and OdaStat-G 1.0.48.

7. Add PPM Hours to "Instrument Parameters" in OdaStat-G

A control for displaying and resetting the sensor exposure value for the OdaLog L2 and RTx has been added to OdaStat-G. This control only appears when OdaStat-G is in "Service Mode".